



# 2-Day Executive Team Off-Site

## The Trust Operating System Intensive™

### A 2-Day Intensive Executive Transformation Workshop

The Trust Operating System Intensive™ is not a motivational leadership retreat. It is a strategic executive transformation experience designed to help organizations build trust at the human level and operationalize it at the organizational level. The result is stronger leadership, a healthier culture, faster decision-making, better execution, greater accountability, and measurable organizational performance.



---

## Align Leadership. Accelerate Execution. Build Organizational Trust.

---

### OVERALL OBJECTIVE

The Trust Operating System Intensive™ is a highly immersive two-day executive transformation experience designed to help leadership teams build trust, align strategically, improve execution, strengthen accountability, and create sustainable organizational performance.

Unlike traditional leadership workshops that focus only on culture or motivation, this intensive combines:

- Leadership trust dynamics
- Behavioral trust diagnostics
- Organizational alignment
- Execution systems
- Communication structures
- Accountability frameworks
- Operational performance disciplines

– Overall Objective Continues –

Our two-day offsite, integrates two proprietary transformation frameworks:

## **Unlock the Trust™ Code**

This is the human and behavioural trust foundation, built around the Four Trust Pillars:

1. Credibility
2. Reliability
3. Intimacy
4. Self-Orientation

**AND**

## **Trust Operating System™ (Trust OS™)**

The organizational execution framework is built around five operational dimensions of trust:

1. Clarity of Direction
2. Decision Confidence
3. Execution Reliability
4. Transparency and Communication
5. Accountability and Ownership

Together, these frameworks help organizations strengthen both:

- a) the human side of trust, and
- b) the operational side of execution.

## SESSION OVERVIEW

This intensive two-day offsite is designed specifically for:

- Executive leadership teams
- Founders & senior management
- Government & institutional leaders
- Organizational transformation teams
- Business Unit Leaders
- High-growth organizations

The workshop is practical, strategic, executive-level, and transformation-focused.

Every exercise is tied directly to:

- Leadership effectiveness,
- Organizational trust,
- Strategic alignment,
- Execution consistency,
- Operational accountability,
- and measurable business performance.

The experience combines:

- executive facilitation,
- diagnostics,
- strategic working sessions,
- team exercises,
- leadership alignment conversations,
- execution reviews,
- and implementation planning.

Participants work through real organizational challenges while learning how to install Trust OS™ as a sustainable operating framework.

## EXPECTED OUTCOMES

By the end of the two-day intensive, leadership teams will:

- Understand the hidden behavioral drivers of trust and distrust.
- Diagnose leadership and organizational trust breakdowns.
- Improve executive alignment and decision-making.
- Reduce silos, friction, and accountability gaps.
- Strengthen communication flow and organizational clarity.
- Improve execution consistency and follow-through.
- Build a healthier leadership culture.
- Clarify organizational priorities and ownership.
- Create practical systems for sustaining trust and performance.
- Leave with a Trust OS™ implementation roadmap.



# THE TRUST TRANSFORMATION ARCHITECTURE

## PHASE 1 – THE TRUST FOUNDATIONS™

### Building the Human Architecture of Trust

This phase focuses on the behavioral and relational dynamics that determine whether trust grows or breaks down inside leadership teams and organizations.

#### Core Focus:

To help leaders understand how trust is built, broken, reinforced, and operationalized within leadership teams and organizations. It includes:

- Leadership behaviours
- Trust psychology
- Executive relationships
- Team dynamics
- The Four Trust Pillars:
  1. Credibility
  2. Reliability
  3. Intimacy
  4. Self-orientation

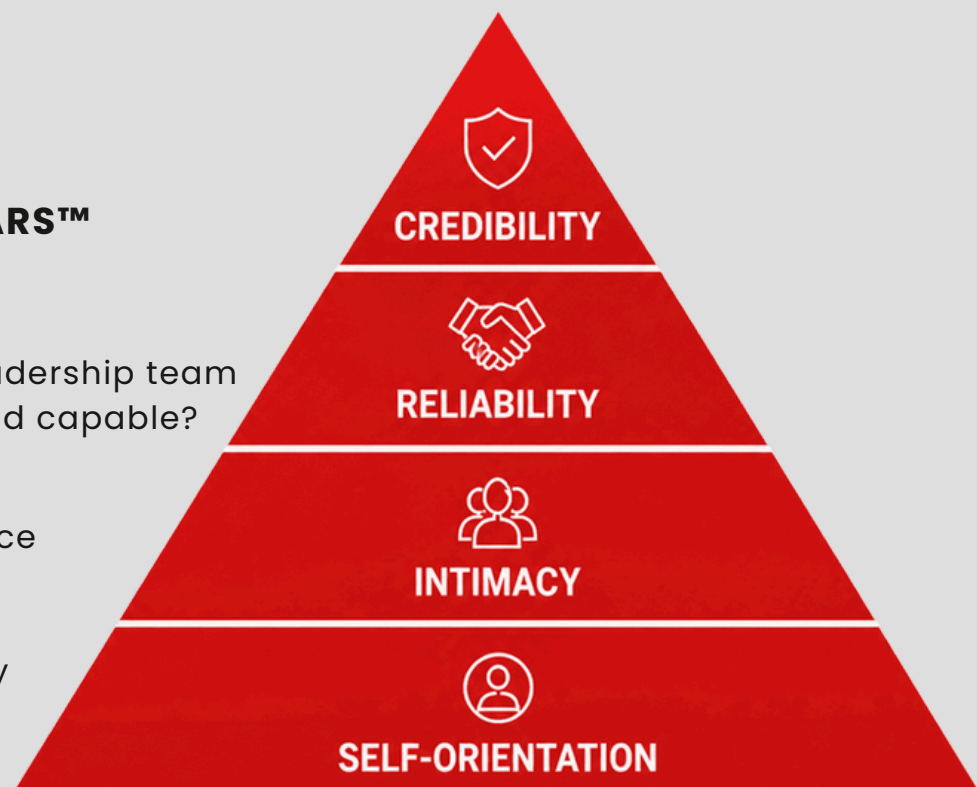
#### THE FOUR TRUST PILLARS™

##### Pillar 1 – Credibility

Do people believe the leadership team is competent, reliable, and capable?

#### Focus Areas:

- Leadership competence
- Strategic confidence
- Integrity
- Professional credibility
- Consistency between words and actions



## Pillar 2 – Reliability

Can people rely on leaders and teams to follow through consistently?

### Focus Areas:

- Consistency
- Follow-through
- Accountability
- Execution discipline
- Dependability

## Pillar 3 – Intimacy

Do people feel psychologically safe enough to communicate openly and honestly?

### Focus Areas:

- Emotional trust
- Psychological safety
- Openness
- Relationship strength
- Honest communication

## Pillar 4 – Self-Orientation

Do leaders prioritize organizational success over ego, politics, and self-interest?

### Focus Areas:

- Servant leadership
- Humility
- Collaboration
- Reduced politics
- Organizational alignment

## PHASE 2 – TRUST EXECUTION SYSTEMS™

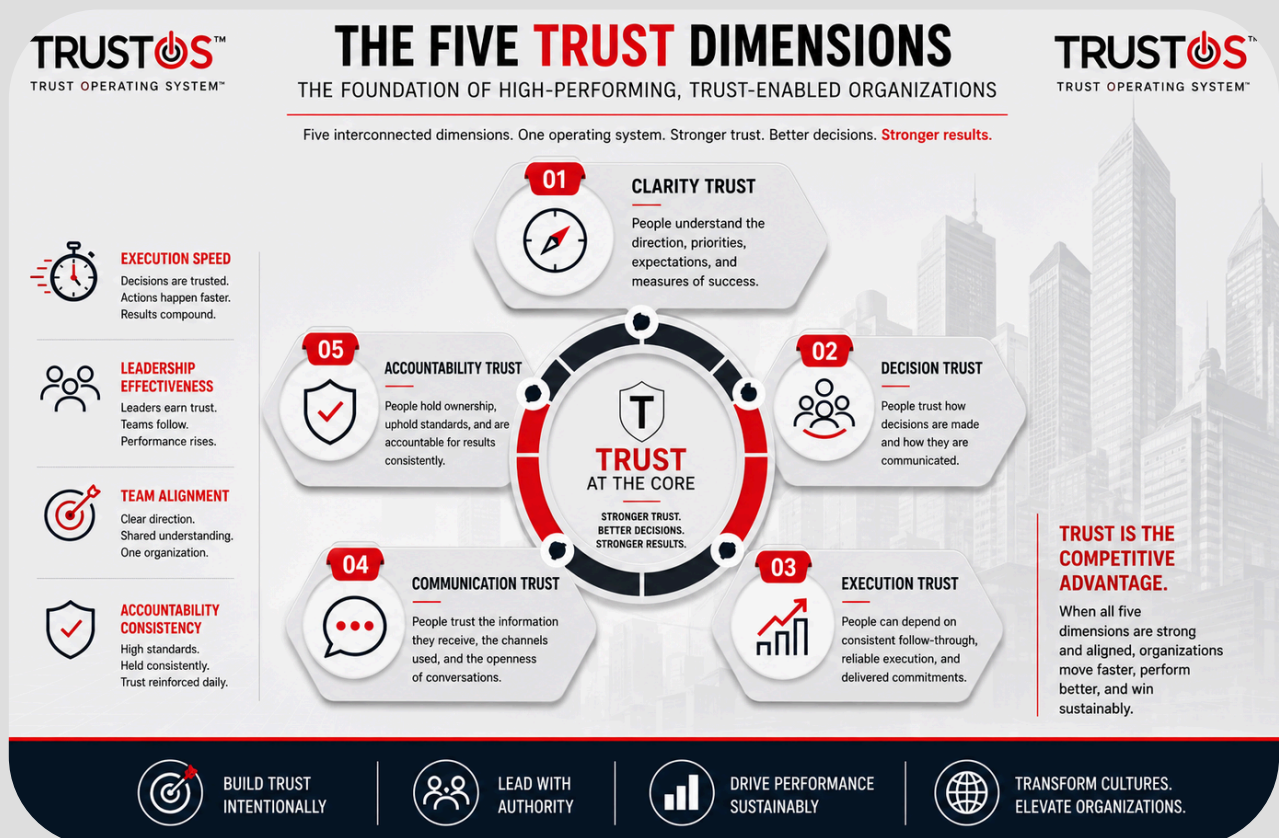
### Operationalizing Trust Across the Organization

This phase translates trust into systems, structures, leadership rhythms, communication flows, and execution discipline.

#### THE FIVE TRUST OS™ DIMENSIONS

##### Focus Areas:

- Organizational clarity
- Decision-making systems
- Execution reliability
- Communication frameworks
- Accountability structures
- Performance alignment



# Day One - Discipline One:

## Unlocking The TRUST Code™

### Objective

To help leaders understand how trust is built, broken, reinforced, and sustained within leadership teams and organizations.

This session explores how behavioral trust patterns directly influence:

- Execution,
- Collaboration,
- Communication,
- Accountability, and
- Organizational performance.

### Key Areas Covered

#### Understanding the Trust Equation

- Why trust is the foundation of organizational performance
- The hidden costs of low-trust leadership
- How distrust silently undermines execution

#### Exploring the Four Pillars of Trust

##### Credibility

- Building confidence through trustworthy leadership
- How competence shapes organizational confidence

##### Reliability

- Creating a culture of consistent follow-through
- Why inconsistency erodes trust in execution

##### Intimacy

- Strengthening psychological safety
- Fostering openness and authentic communication

##### Self-Orientation

- Reducing ego-driven leadership
- Cultivating leadership behaviours that put the organization first

## Leadership Trust Dynamics

- Trust breakdown patterns
- Executive team friction
- Organizational politics and silos
- Communication distrust
- Leadership alignment gaps

## ACTIVITIES INCLUDE

- Unlock the TRUST™ Assessment
- Trust OS™ Behavioural Index Review
- Leadership Trust Mapping
- Team Trust Exercises
- Executive Reflection Sessions
- Trust Breakdown Discussions
- Psychological Safety Conversations
- Leadership Alignment Workshops

## OUTCOMES

The leadership team develops:

- Deeper trust,
- Stronger alignment,
- Improved communication,
- Healthier executive dynamics, and
- Greater organizational cohesion.

Leaders gain a clearer understanding of how their behaviours directly influence organizational trust and performance.

# Day One - Discipline Two:

## Creating Organizational Clarity

### Objective

Align the leadership team around the strategic, operational, and behavioral foundations needed for organizational effectiveness.

### Key Areas Covered

#### Why Do We Exist?

- Clarifying organizational purpose
- Aligning strategic intent

#### How Do We Behave?

- Clarifying organizational values
- Aligning expected behaviours

#### What Must We Execute Exceptionally Well?

- Defining strategic priorities
- Focusing execution efforts

#### What Is Breaking Trust Today?

- Analyzing organizational friction
- Identifying trust breakdowns

#### What Is Most Important Right Now?

- Defining strategic priorities
- Aligning leadership focus

#### Who Owns What?

- Clarifying accountability
- Eliminating role ambiguity



## ACTIVITIES INCLUDE

- Strategic Alignment Sessions
- Organizational Friction Mapping
- Accountability Architecture Workshops
- Leadership Priority Alignment
- Decision Ownership Reviews

## OUTCOMES

The leadership team gains:

- shared priorities,
- clearer direction,
- stronger accountability,
- and greater execution alignment.

## Day Two - Discipline Three:

# INSTALLING THE TRUST OS™

### Objective

Help leaders operationalize trust into systems, execution structures, communication rhythms, and organizational processes.

### Key Areas Covered

#### Clarity of Direction

- Eliminating strategic confusion
- Aligning leadership messaging

#### Decision Confidence

- Improving decision speed and quality
- Clarifying decision rights

#### Execution Reliability

- Strengthening operational consistency
- Improving follow-through discipline

#### Transparency and Communication

- Building transparent communication systems
- Improving cross-functional information flow

#### Accountability and Ownership

- Strengthening ownership culture
- Reinforcing execution accountability



## ACTIVITIES INCLUDE

- Trust OS™ Core Index Review
- Execution Flow Mapping
- Decision Architecture Sessions
- Communication Rhythm Design
- Leadership Meeting Redesign
- Accountability Mapping Workshops

## OUTCOMES

Leaders leave with practical systems that:

- Improve execution,
- Accelerate decisions-making,
- Strengthen accountability,
- Increase transparency, and
- Reinforce organizational trust.

## Day Two - Discipline Four:

# Sustaining Trust and Transformation

### Objective

To create a long-term roadmap for embedding trust in culture, leadership behaviour, systems, and organizational operations.

### Key Areas Covered

#### Strengthening Trust Through Systems

- Embedding trust into daily operations
- Aligning systems with desired behaviours

#### Building a Sustainable Culture

- Reinforcing trust-building habits
- Leadership role modeling
- Organizational consistency

#### Trust and Performance Measurement

- Strengthening operational consistency
- Improving follow-through discipline

#### Transformation Roadmap

- Implementation phases
- Leadership commitments
- 90-day action planning



## ACTIVITIES INCLUDE

- Trust Transformation Roadmap Design
- Executive Action Planning
- Leadership Commitment Sessions
- Organizational Integration Planning

## OUTCOMES

The organization leaves with:

- a clear transformation roadmap,
- implementation priorities,
- leadership commitments,
- execution structures,
- and sustainable trust systems.

## FINAL DELIVERABLES

Participants receive:

- Unlock the TRUST™ Executive Guide
- Trust OS™ Intensive Workbook
- Trust OS™ Behavioural Index Insights
- Trust OS™ Core Index Insights
- Organizational Trust Diagnostic Summary
- Leadership Alignment Findings
- Trust Breakdown Analysis
- Organizational Clarity Blueprint
- Accountability Architecture Map
- Trust OS™ Transformation Roadmap
- Executive 90-Day Action Plan



The **Trust Operating System Intensive™** is not a motivational leadership retreat.

It is a strategic executive transformation experience that enables organizations to build trust at the human level and operationalize trust at the organizational level.

The result is:

- Stronger leadership,
- Healthier culture,
- Faster decision-making,
- Better execution,
- Greater accountability, and
- Measurable improvements in organizational performance.

TRUST OS™

# TRANSFORMATION JOURNEY

From Insight to Impact. From Trust to Transformation.

A proven, systematic approach that helps organizations diagnose the real issues, design the right systems, implement with precision, and scale sustainable results.

**01** **DIAGNOSE**

We uncover the root causes of execution friction, trust gaps, and alignment breakdowns.

- Trust Diagnostics
- Stakeholder Insights
- Performance Analysis
- Gap Identification

**02** **DESIGN**

We co-create a tailored blueprint of systems, structures, and behaviors that drive clarity, alignment, and accountability.

- Strategy & Alignment
- Operating Model Design
- Accountability Frameworks
- Communication Architecture

**03** **IMPLEMENT**

We bring the plan to life through disciplined execution, capability building, and leadership engagement.

- Execution Planning
- Capability Development
- Change Enablement
- Performance Tracking

**04** **SCALE**

We embed the systems, reinforce accountability, and scale sustainable performance across the organization.

- Sustain & Optimize
- Culture Reinforcement
- Continuous Improvement
- Enterprise-Wide Scale

At the heart of every stage is **TRUST**. | It's our operating system. It's your competitive advantage.

**CLARITY**  
See the real picture

**ALIGNMENT**  
Move in one direction

**ACCOUNTABILITY**  
Own the outcomes

**EXECUTION**  
Deliver with discipline

**RESULTS**  
Sustainable impact

**BUILD TRUST. REMOVE FRICTION. ACCELERATE EXECUTION.**

# THANK YOU

**Contact us**

[info@nkemmpamah.com](mailto:info@nkemmpamah.com)

**More info**

<https://nkemmpamah.com>